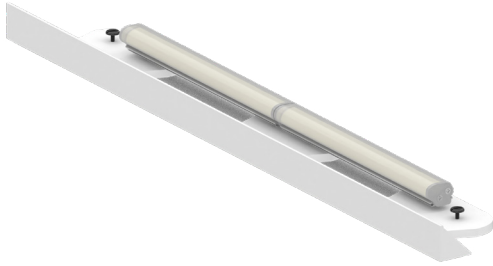




PROJECT

FIXTURE TYPE



The standalone valance series is a low profile cove fixture with an integrated white paintable valance that creates clean, seamless details in field built coves, axiom edges, millwork, and retrofit work. The linear LED system integrates with the valance and framing so the entire assembly reads as one simple, finished element.

SPECIFICATION CODE BUILDER

TYPE	LENS	LUMENS	CCT	POWER SUPPLY	OPTIONS
SA-V	<input type="text"/>	<input type="text"/>	<input type="text"/>	<input type="text"/>	<input type="text"/>
	FWD	350	27K	0-10V	30' FEED CABLE
	BAR	700	30K	0-10V 0.1%	75' FEED CABLE
	ASY	1000	35K	PHASE	100' FEED CABLE
			40K	DALI	JUMPER CABLE
			DTW	L3Do	EM
				ATHENA	

EXAMPLE: SA-V - ASY - 700 - 30K - 010V

LUMINAIRE DETAILS

LENS

- FWD* forward throw
- BAR symmetric
- ASY performance asymmetric

COLOR TEMPERATURE (95+CRI)

- DTW - dim to warm - 1900K - 3000K (6W ONLY)
- 27K - 2700K
- 35K - 3500K
- 30K - 3000K
- 40K - 4000K

ELECTRICAL CONFIGURATION

LUMENS	WATTAGE/FT	MAX RUN LENGTH (TYPICAL)
350	3	30 FT
700	6	15 FT
1000	9	10 FT

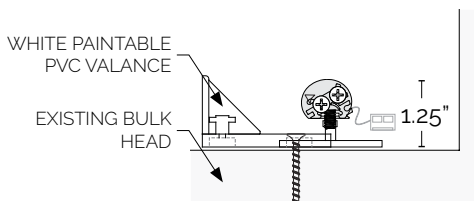
REMOTE POWER SUPPLY

- 0-10V - dimming (1%)
- 0-10V 0.1% PHASE - 0.1% dimming QTL QZ driver
- L3Do - Hi-Lume Premier 0.1% SOFTB - 3 wire + EcoSystem
- DALI 0.1%
- LUTRON - ATHENA RF 1% dimming (static white)

LUMINAIRES

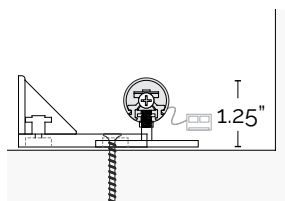
FWD - FOWARD THROW

DISTANCE FROM CEILING 6"+



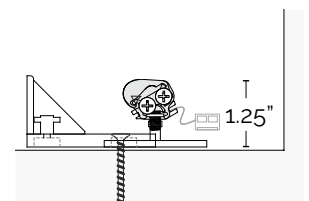
BAR - SYMMETRIC

DISTANCE FROM CEILING 12"+



ASY - ASYMMETRIC

DISTANCE FROM CEILING 4" -12"



PAT.10,295,132

FEATURES

OPTICS

frosted acrylic lens
frosted asymmetric collimator

INSTALLATION

Surface mounted linear fixture attaches from above to the mounting surface for quick, straightforward installation. The integral flexible paintable valance creates a clean visual edge without separate trim pieces.

MATERIALS

Extruded aluminum linear LED fixture with integral flexible paintable valance for use at ceiling or soffit conditions. Supplied with standard 2' feed cable and mounting hardware for surface applications.

CERTIFICATIONS

cUL Listed, JA8 and damp listings available
Made and designed in the USA

OPTIONS

jumper cable 6 foot
2000K, 2200K, 2400K available on request
consult factory for modification requests

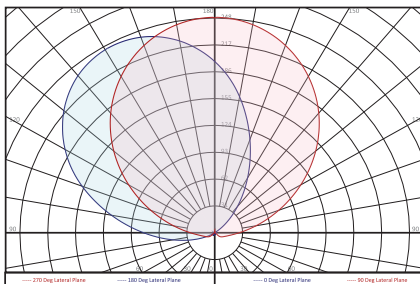
RECOMMEND GAUGES FOR REMOTE WIRE DISTANCE:

	MAX. REMOTE DISTANCE
18 AWG	30 FT
16 AWG	50 FT
14 AWG	75 FT
12 AWG	100FT

PHOTOMETRICS

*ALL PHOTOMETRIC DATA SHOWN FOR 10W/FT 4' FIXTURE @ 3000K

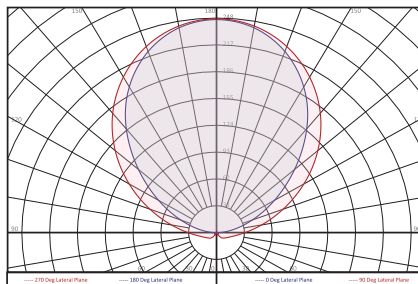
FWD



POWER
38 watts

LUMENS
4370 lm

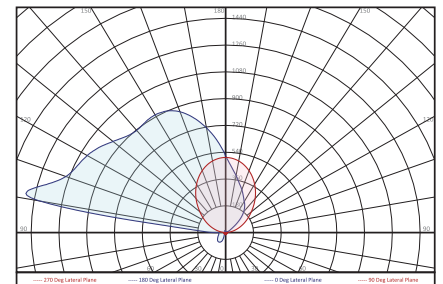
BAR



POWER
38 watts

LUMENS
4370 lm

ASY



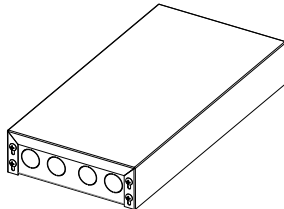
POWER
38 watts

LUMENS
3640 lm

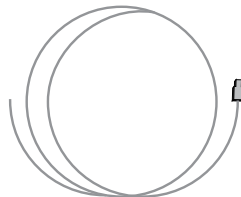
OPTIONS

DRIVER BOX

12" X 6" X 12"

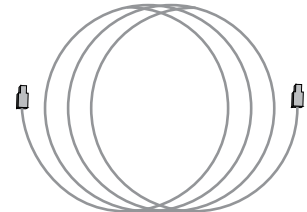


INPUT WHIP



JUMPER CABLE

6FT



PAT.10,295,132