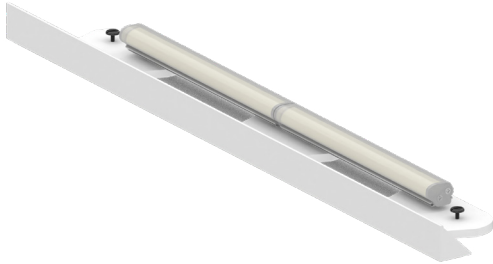




**PROJECT**

**FIXTURE TYPE**



The standalone valance series is a low profile cove fixture with an integrated white paintable valance that creates clean, seamless details in field built coves, axiom edges, millwork, and retrofit work. The linear LED system integrates with the valance and framing so the entire assembly reads as one simple, finished element.

**SPECIFICATION CODE BUILDER**

TYPE	LENS	DYNAMIC CCT	POWER SUPPLY	OPTIONS
SA-V	<input type="text"/>	<input type="text"/>	<input type="text"/>	<input type="text"/>
	FWD	RGB	DMX	*ADJUSTABLE CLIP (ASY ONLY)
	BAR	RGBW	DALI	30' FEED CABLE
	ASY			75' FEED CABLE
				100' FEED CABLE
				ACUSTABULT (7/8")
				JUMPER CABLE
				EM

EXAMPLE: SA-V - ASY - RGB - DMX

**LUMINAIRE DETAILS**

**LENS**

FWD\* forward throw  
BAR symmetric

**REMOTE POWER SUPPLY**

DMX  
DALI 0.1%

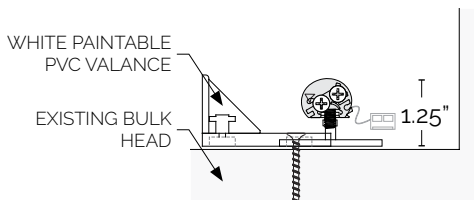
**DYNAMIC COLOR TEMPERATURE (95+CRI)**

RGB (5W)  
RGBW (5W)

**LUMINAIRES**

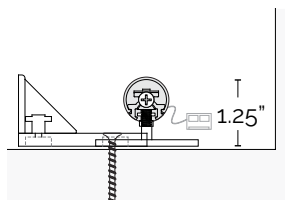
**FWD - FOWARD THROW**

DISTANCE FROM CEILING 6"+



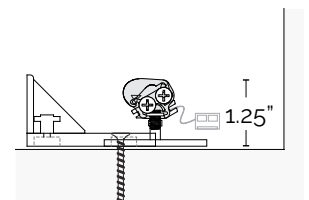
**BAR - SYMMETRIC**

DISTANCE FROM CEILING 12"+



**ASY - ASYMMETRIC**

DISTANCE FROM CEILING 4" -12"



PAT.10,295,132

**FEATURES**
**OPTICS**

frosted acrylic lens  
 frosted asymmetric collimator

**INSTALLATION**

Surface mounted linear fixture attaches from above to the mounting surface for quick, straightforward installation. The integral flexible paintable valance creates a clean visual edge without separate trim pieces.

**MATERIALS**

Extruded aluminum linear LED fixture with integral flexible paintable valance for use at ceiling or soffit conditions. Supplied with standard 2' feed cable and mounting hardware for surface applications.

**CERTIFICATIONS**

cUL Listed, JA8 and damp listings available  
 Made and designed in the USA

**OPTIONS**

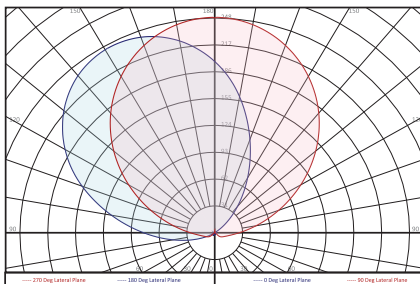
jumper cable 6 foot  
 2000K, 2200K, 2400K available on request  
 consult factory for modification requests

**RECOMMEND GAUGES FOR REMOTE WIRE DISTANCE:**

	MAX. REMOTE DISTANCE
18 AWG	30 FT
16 AWG	50 FT
14 AWG	75 FT
12 AWG	100FT

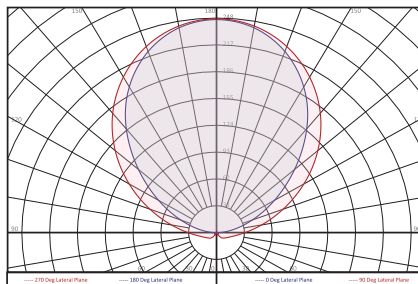
**PHOTOMETRICS**

\*ALL PHOTOMETRIC DATA SHOWN FOR 10W/FT 4' FIXTURE @ 3000K

**FWD**


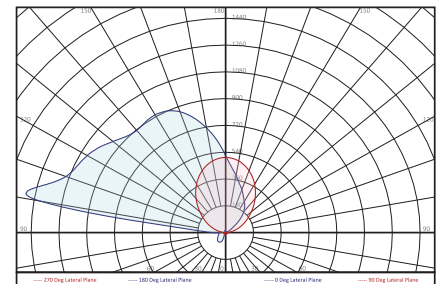
**POWER**  
38 watts

**LUMENS**  
4370 lm

**BAR**


**POWER**  
38 watts

**LUMENS**  
4370 lm

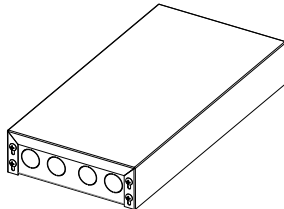
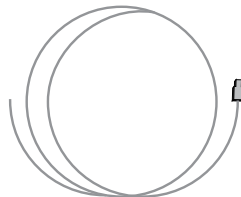
**ASY**


**POWER**  
38 watts

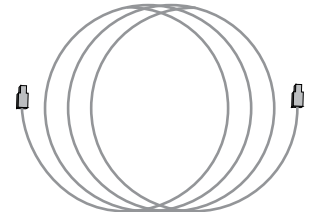
**LUMENS**  
3640 lm

**OPTIONS**
**DRIVER BOX**

12" X 6" X 12"


**INPUT WHIP**

**JUMPER CABLE**

6FT



PAT.10,295,132